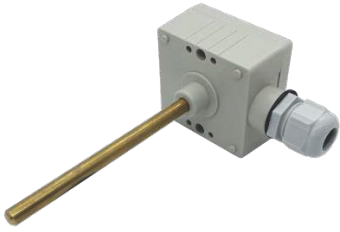


ISTP

Immersion Temperature Sensors



Key Features:

- Compatible with most leading BMS systems
- Available for low temperature hot water systems
- Brass or high grade stainless steel pockets available
- Secure IP65 enclosure

Product Overview:

The ISTP sensor is designed for accurate temperature monitoring in liquid flow applications such as chilled and heating water systems. Housed in a rigid stem, the sensor is installed into a brass (standard) or stainless steel immersion pocket, with 125mm pocket length provided as standard and 65mm or other lengths available upon request.

To ensure reliability in low-temperature environments, the sensor stem, element, and terminal board are epoxy sealed, protecting against condensation in chilled water applications. A variety of sensing elements are available to suit specific system requirements.

The ISTP is supplied without a pocket as standard—please order pockets separately based on your installation needs. For additional options or custom lengths, contact our sales team.

Technical Specifications:

Material:	Body: Flame retardant polycarbonate Probe: Brass
Sensing Elements:	See table
Accuracy:	+/-0.15°C @ 70°C thermistor +/-0.4°C (4-20mA) +/-0.5°C (0-10V)
Operating Temperature:	-40 to +110°C
Terminals:	1.0mm recommended 2.5mm max
Mounting Location:	Positioned to measure the controlled condition
Dimensions:	Probe: 125mm as standard Body: H60 x W65 x D36 20mm cable gland entry
Protection:	IP65
Country of Origin:	UK
Product Codes:	See table

Thermistor Options:

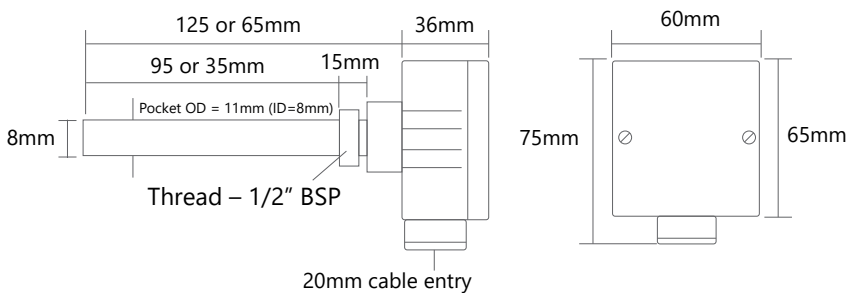
Element Type	Product Codes for 125mm immersion Add /65 to code for 65mm immersion probe length		Accuracy
	Standard	Chilled Water	
10K3A1	ISTP-10K3	ISTPCW-10K3	+/- 0.15°C
10K4A1	ISTP-10K4	ISTPCW-10K4	+/- 0.15°C
20K6A1	ISTP-20K	ISTPCW-20K	+/- 0.15°C
Ni1000	ISTP-NI1000	ISTPCW-NI1000	+/- 0.3°C
PT1000	ISTP-PT1000	ISTPCW-PT1000	+/- 0.3°C
4-20mA	ISTP-420 (-10 to +40°C)*		+/- 0.4°C
0-10V	ISTP-010 (-10 to +40°C)*		+/- 0.5°C

* Other ranges available on request.

Other thermistor types available on request.

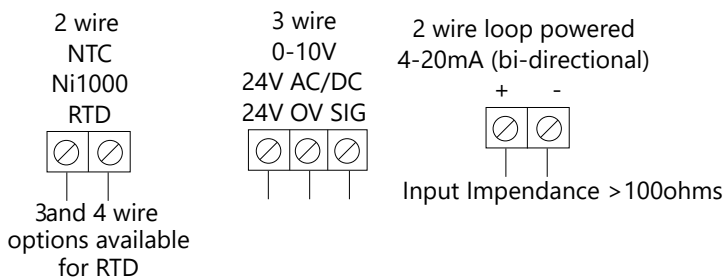
The 10K3A1 range of environmental sensors can be used with all S&S BACnet controllers

Dimensions:



Sensor is supplied with cable entry gland fitted

Connections:



Installation and Maintenance::

- The sensors should be installed by a qualified engineer.
- The sensor should be placed in a position to best represent the temperature.