

## ParkSafe Detector

Designed to be used with the ParkSafe



### Key Features:

- 24VDC Power Input
- LED Status Indication
- Modern & Compact Design
- Plug & Play Installation
- Used With An S&S ParkSafe Controller
- Up to 16 Detectors Can Be Linked Together
- End of Operational Life & Annual Service Notification to ParkSafe Controller

### Product Overview:

The S&S Middle East PS range of detectors work in combination with the S&S Middle East ParkSafe, a Gas Detection & Ventilation Controller specifically designed for car park CO & NO<sub>2</sub> monitoring. Both the COPS (carbon monoxide) & NO<sub>2</sub>PS (nitrogen dioxide) features an electrochemical sensor for industrial and commercial indoor applications. Compact, modern, digital design makes the units aesthetically pleasing and easy to install.

### Popular Applications:

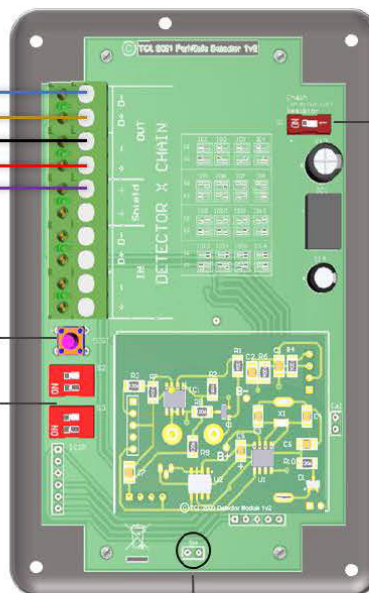
- Emergency Service Stations (Apparatus Bays)
- Enclosed car parks
- Condominiums
- Hotels
- Shopping Malls

**Detector Chain Terminals**  
 Power & Data Connections  
 Wire Size: 18-14AWG

Modbus Data  
 24vdc Power  
 Shield

Circuit Simulation Test Button

ID Switch Configuration



**Chain Termination Resistor**

Switch on first and last device in the chain.

Service Message Reset Header

## ParkSafe Detector Technical Specifications

### General

Model:	ParkSafe Detector
Target Gases Available:	Carbon Monoxide (CO) / Nitrogen Dioxide (NO <sub>2</sub> )
Size: (H x W x D)	4.92 x 3.15 x 1.38"
Housing Material:	ABS Polylac - PA765
Mounting:	Wall Mounting - No limits - Non-Hazardous Areas
Weight	1.6oz

### User Interface

Display	LED
Visual Indicators:	Power / Alarm / Fault
Audible Alarm:	None

### Power Supply

Power Consumption:	15mA Max @ 24Vdc
DC Power:	12-32Vdc (24vdc Nominal)
Internal Fuse:	None

### Equipment

Overvoltage Category:	2
Pollution Degree:	2

### Environmental

Ingress Protection:	Not Formally Evaluated
Operating:	-10 ~ 50°C / 14 ~ 122°F 30 ~ 80% RH (non-condensing)
Storage:	-25 ~ 50°C / -13-122°F up to 95% RH (non-condensing)
Altitude Rating:	<6500ft

### Wiring

Typical	Copper 18AWG (0.75mm <sup>2</sup> ) Min. 8x screw terminals.
---------	--

### Other

Communication	RS485 MODBUS RTU
---------------	------------------

### Sensor Specifications

Factory Calibration Conditions	25° ± 5°C - 77° ± 41°F (40-70% RH)
Sensor Type	Electromechanical

Gas Sensor	Measuring Range (PPM)	Calibration Gas	Response (T90)	Response (T10)	Alarm: 1 (Pre Alarm Warning)	Alarm: 2	*EOL (Years)
Carbon Monoxide	0-1000ppm	120pm CO	<60s	<50s	<25ppm	<100ppm	5
Nitrogen Dioxide	0-20ppm	5pm NO <sub>2</sub>	<60s	<50s	<0.7ppm	<2ppm	3